

A YEAR OF  
*Golden Moments*



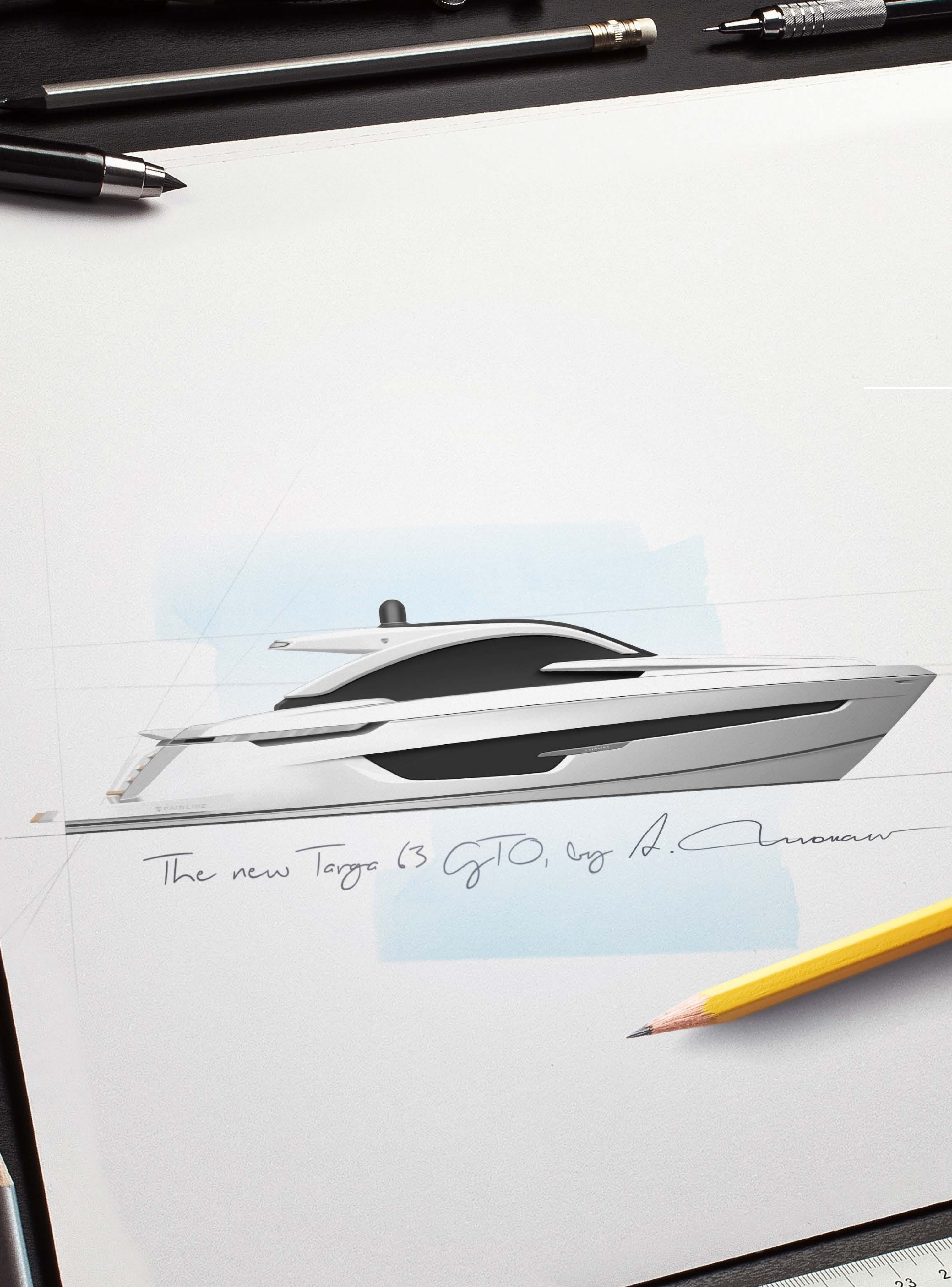
Impeccable craft, effortless style  
The stunning new

# TARGA 63 GTO



Every. Perfect. Detail.





## Designed to have it all

Meet the future of Fairline...and the perfect expression of Italian flair, Dutch ingenuity and British craftsmanship beautifully combined. The new Targa 63 GTO is our first model created by renowned Italian superyacht designer, Alberto Mancini. Teamed with our experienced in-house designers, his innate sense of flair has led to a yacht that's innovative, versatile, light, bright and achingly stylish.

At first glance it is difficult to ignore the Mancini touch, which is in every curve of the dramatic new hull and sleek profile. On-board innovations abound, including a large, sliding, glazed sunroof and powered patio doors that disappear through the cockpit floor to give you the benefits of an OPEN and GT combined. The very flexible interiors seamlessly offer a wide range of cabin, cockpit and saloon options that suit your needs. It's the Fairline thrill, with added style.

TARGA  
63 GTO

INTRODUCTION

MAIN  
FEATURES

EXTERIOR  
DESIGN

INTERIOR  
DESIGN

PRINCIPLE  
DIMENSIONS

GENERAL  
ARRANGEMENTS

CELEBRATING  
50 YEARS

DEALERS

FAIRLINE  
YACHTS





# Same attention to craft, new bold design language

The Targa 63 GTO is an evolution, not a revolution. In fact, it is still instantly recognisable as a Fairline. Combined with the rigorous and proven naval architecture by renowned Dutch firm Vripack, and matched with the usual unparalleled Fairline craftsmanship, it's a natural step for anyone who wants stunning good looks and creative flair from bow to stern.

## SPECIFICATION HIGHLIGHTS

- **Designed by Alberto Mancini**
- **Naval architecture by Vripack**
- **Lowering patio doors**
- **Powered glazed sunroof**
- **Powered sunshade over cockpit**
- **'Fresh air maker' air conditioning**
- **f-Drive multifunction glass bridge**
- **Fully integrated audio/visual systems throughout**
- **Long cockpit or long saloon layouts**
- **Foredeck seating & sunbeds**
- **Single or twin crew cabin options**
- **Garage for Williams 325 TurboJet & a pair of SEABOB's**





TARGA  
63 GTO

INTRODUCTION

MAIN  
FEATURES

EXTERIOR  
DESIGN

INTERIOR  
DESIGN

PRINCIPLE  
DIMENSIONS

GENERAL  
ARRANGEMENTS

CELEBRATING  
50 YEARS

DEALERS







TARGA  
63 GTO

INTRODUCTION

MAIN  
FEATURES

EXTERIOR  
DESIGN

INTERIOR  
DESIGN

PRINCIPLE  
DIMENSIONS

GENERAL  
ARRANGEMENTS

CELEBRATING  
50 YEARS

DEALERS

  
**FAIRLINE**  
YACHTS





TARGA  
63 GTO

INTRODUCTION

MAIN  
FEATURES

EXTERIOR  
DESIGN

INTERIOR  
DESIGN

PRINCIPLE  
DIMENSIONS

GENERAL  
ARRANGEMENTS

CELEBRATING  
50 YEARS

DEALERS

  
**FAIRLINE**  
YACHTS







TARGA  
63 GTO

INTRODUCTION

MAIN  
FEATURES

EXTERIOR  
DESIGN

INTERIOR  
DESIGN

PRINCIPLE  
DIMENSIONS

GENERAL  
ARRANGEMENTS

CELEBRATING  
50 YEARS

DEALERS

  
**FAIRLINE**  
YACHTS







TARGA  
63 GTO

INTRODUCTION

MAIN  
FEATURES

EXTERIOR  
DESIGN

INTERIOR  
DESIGN

PRINCIPLE  
DIMENSIONS

GENERAL  
ARRANGEMENTS

CELEBRATING  
50 YEARS

DEALERS

  
**FAIRLINE**  
YACHTS



Innovatively styled  
for maximum enjoyment



TARGA  
63 GTO

INTRODUCTION

MAIN  
FEATURES

EXTERIOR  
DESIGN

INTERIOR  
DESIGN

PRINCIPLE  
DIMENSIONS

GENERAL  
ARRANGEMENTS

CELEBRATING  
50 YEARS

DEALERS





# The inside is good-looking too

In the spirit of building the perfect yacht at every possible level, we have also carefully created four different interior design schemes for you to choose from:



## AMALFI

Inspired by Liguria's local architecture, this scheme exudes the sunny warmth synonymous with fragrant Italian lemon trees and the umbrella-lined shores of the Amalfi coast.



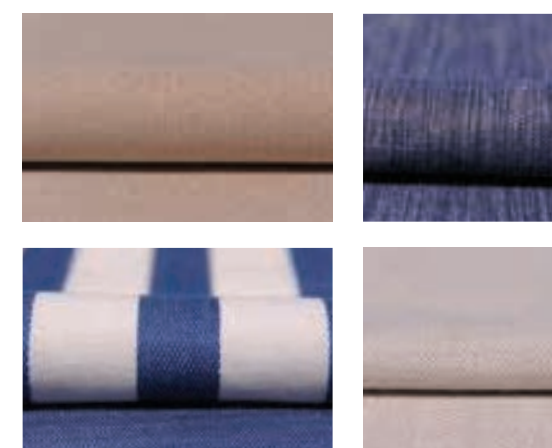
## CAPRI

Understated, earthy colours, effortlessly combined with rich natural textures. All the hallmarks of an interior design collection that is as gentle as the Mediterranean breeze.



## HAMPTONS

Evoking elegant vintage design cues, whilst offering a bold and contemporary interpretation of the luxury that was once the preserve of America's East Coast.



## ST. TROPEZ

An ode to the sea where all manner of deep, oceanic blues tastefully swirl with muted greys, delicate creams and classic nautical motifs.





## Cleaner, sleeker profile

- Length overall (inc. pulpit): 65'4" (19.96m)
  - Length overall (exc. pulpit): 65'2" (19.88m)
  - Beam: 17'2" (5.23m)
  - Number of Berths: 6 – 10
  - Height above waterline (inc. arch & nav. light mast): 17' (5.20m)
  - Draught: 4'8" (1.47m)
  - Transport height: 16'4" (5.0m)
  - Weight: 33.56 imp. tons / 37.47 US tons (34,000kg)
  - Fuel Capacity: 1,029 gallons / 1,236 UK gallons (4,680 litres)
  - Water Capacity: 237 gallons / 285 US gallons (1,080 litres)
- ENGINES & PERFORMANCE**
- Twin Caterpillar C18, shaft drive, diesel with 1150mhp each and an estimated maximum speed of 31 knots
  - Twin MAN V8 1200, shaft drive, diesel with 1200mhp each and an estimated maximum speed of 32 knots

[CLICK HERE FOR  
FULL SPECIFICATIONS](#)





TARGA  
63 GTO

INTRODUCTION

MAIN  
FEATURES

EXTERIOR  
DESIGN

INTERIOR  
DESIGN

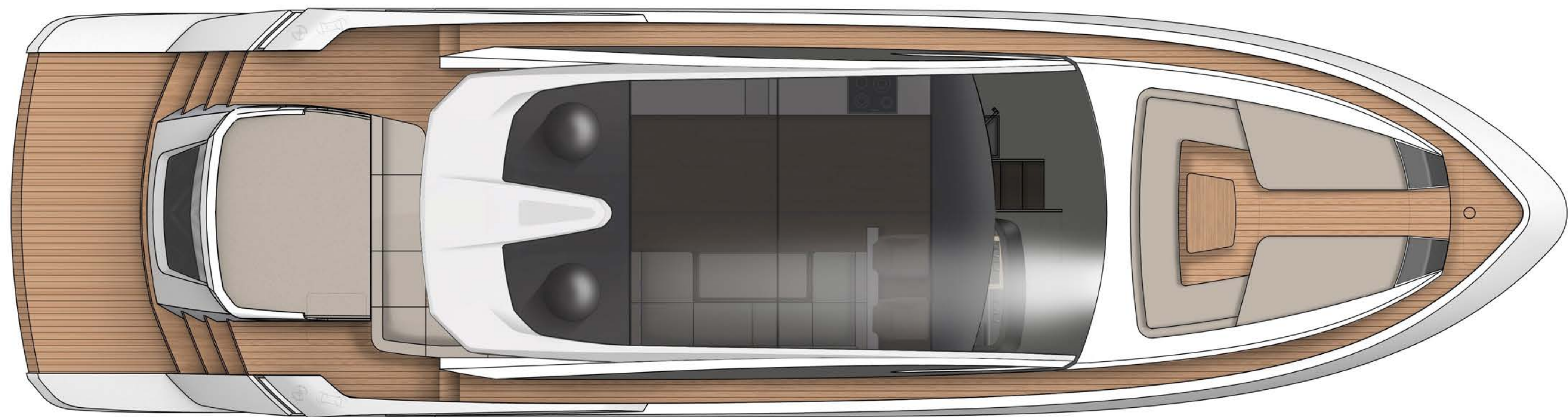
PRINCIPLE  
DIMENSIONS

GENERAL  
ARRANGEMENTS

CELEBRATING  
50 YEARS

DEALERS

  
**FAIRLINE**  
YACHTS



## Extended Cockpit Model

In the Extended cockpit model, enjoy a much larger rear deck with enough room for lounging al fresco on either the large sunpad or expansive seating area.





TARGA  
63 GTO

INTRODUCTION

MAIN  
FEATURES

EXTERIOR  
DESIGN

INTERIOR  
DESIGN

PRINCIPLE  
DIMENSIONS

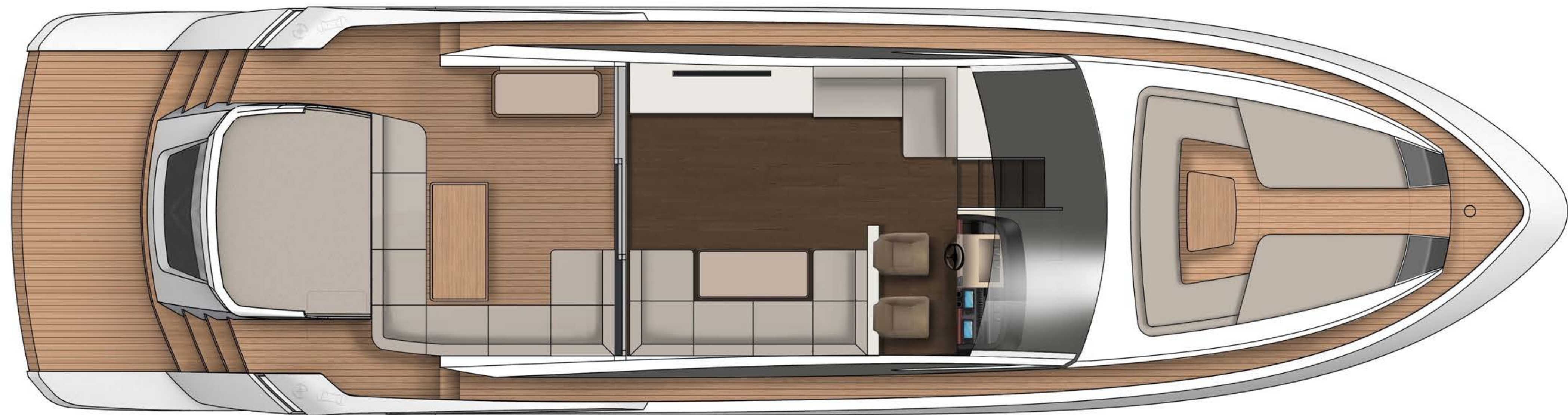
GENERAL  
ARRANGEMENTS

CELEBRATING  
50 YEARS

DEALERS



Galley up



Galley down

## Main Deck – Extended Cockpit Model

With the Extended cockpit model you really can maximise the outside space available to you.





TARGA  
63 GTO

INTRODUCTION

MAIN  
FEATURES

EXTERIOR  
DESIGN

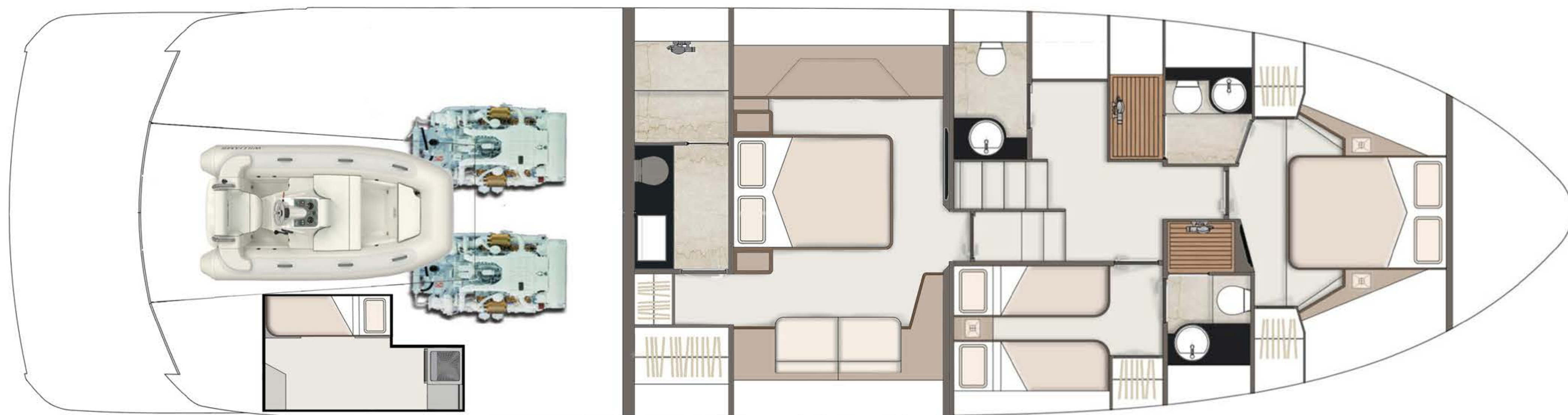
INTERIOR  
DESIGN

PRINCIPLE  
DIMENSIONS

GENERAL  
ARRANGEMENTS

CELEBRATING  
50 YEARS

DEALERS



3 cabin with day head

## Lower Deck – Extended Cockpit Model





TARGA  
63 GTO

INTRODUCTION

MAIN  
FEATURES

EXTERIOR  
DESIGN

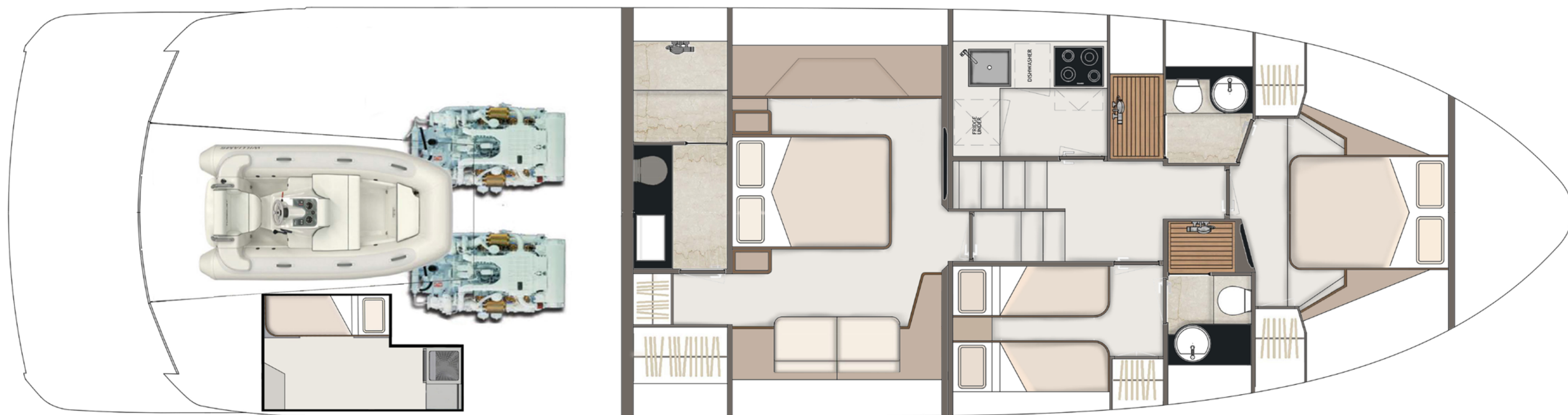
INTERIOR  
DESIGN

PRINCIPLE  
DIMENSIONS

GENERAL  
ARRANGEMENTS

CELEBRATING  
50 YEARS

DEALERS



3 cabin, galley down

## Lower Deck – Extended Cockpit Model





TARGA  
63 GTO

INTRODUCTION

MAIN  
FEATURES

EXTERIOR  
DESIGN

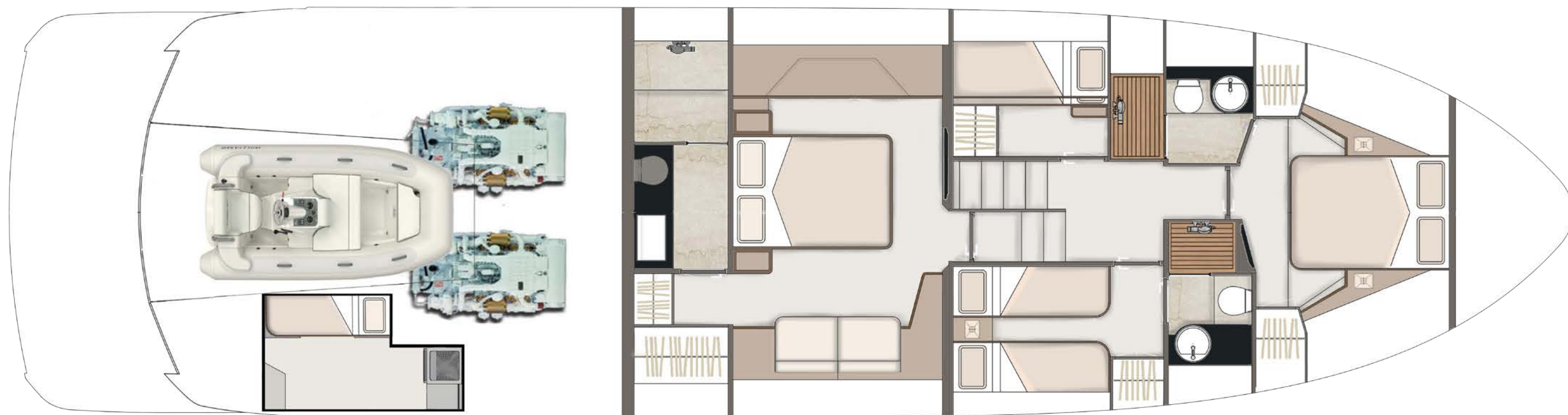
INTERIOR  
DESIGN

PRINCIPLE  
DIMENSIONS

GENERAL  
ARRANGEMENTS

CELEBRATING  
50 YEARS

DEALERS



4 cabin

## Lower Deck – Extended Cockpit Model





TARGA  
63 GTO

INTRODUCTION

MAIN  
FEATURES

EXTERIOR  
DESIGN

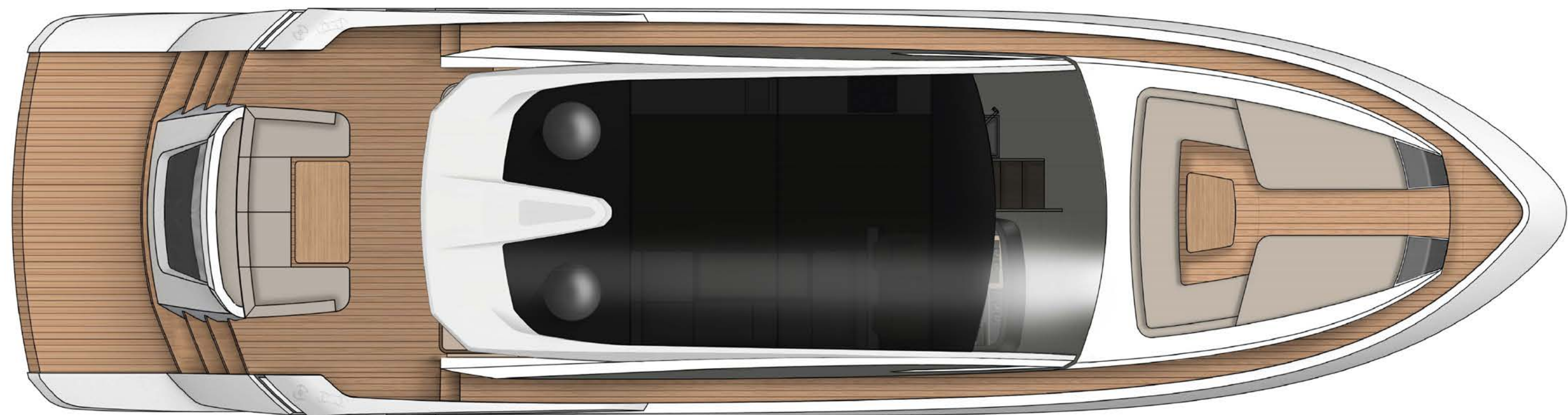
INTERIOR  
DESIGN

PRINCIPLE  
DIMENSIONS

GENERAL  
ARRANGEMENTS

CELEBRATING  
50 YEARS

DEALERS



## Extended Saloon Model

Keeping the generous foredeck seating, but offering a large indoor space, the Extended Saloon Model ensures whatever the climate, there's a place to relax onboard.





TARGA  
63 GTO

INTRODUCTION

MAIN  
FEATURES

EXTERIOR  
DESIGN

INTERIOR  
DESIGN

PRINCIPLE  
DIMENSIONS

GENERAL  
ARRANGEMENTS

CELEBRATING  
50 YEARS

DEALERS



Galley up with dining area opposite

## Main Deck – Extended Saloon Model





TARGA  
63 GTO

INTRODUCTION

MAIN  
FEATURES

EXTERIOR  
DESIGN

INTERIOR  
DESIGN

PRINCIPLE  
DIMENSIONS

GENERAL  
ARRANGEMENTS

CELEBRATING  
50 YEARS

DEALERS



Galley up with additional storage opposite

## Main Deck – Extended Saloon Model





TARGA  
63 GTO

INTRODUCTION

MAIN  
FEATURES

EXTERIOR  
DESIGN

INTERIOR  
DESIGN

PRINCIPLE  
DIMENSIONS

GENERAL  
ARRANGEMENTS

CELEBRATING  
50 YEARS

DEALERS



Galley up, forward

## Main Deck – Extended Saloon Model





TARGA  
63 GTO

INTRODUCTION

MAIN  
FEATURES

EXTERIOR  
DESIGN

INTERIOR  
DESIGN

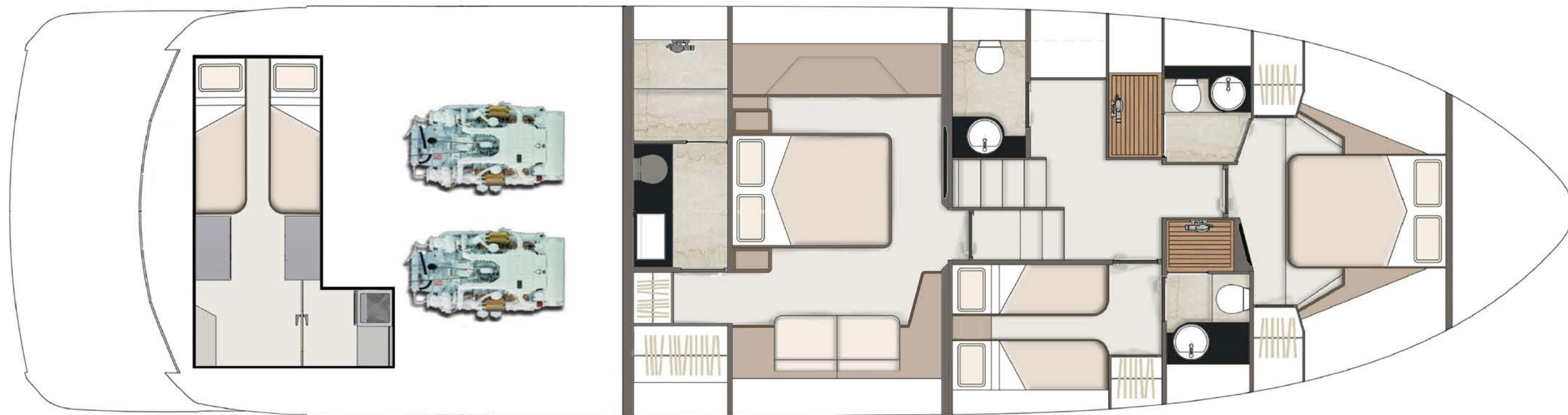
PRINCIPLE  
DIMENSIONS

GENERAL  
ARRANGEMENTS

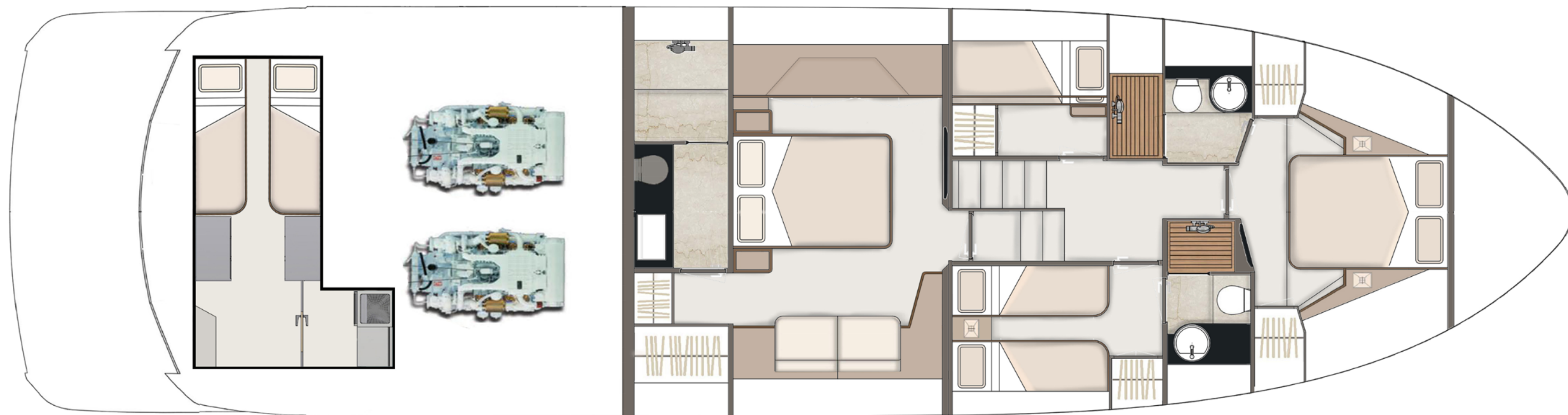
CELEBRATING  
50 YEARS

DEALERS

FAIRLINE  
YACHTS



3 cabin with day head



4 cabin

## Lower Deck – Extended Saloon Model

With 3 or 4 cabin layouts, both with the ability to offer a twin crew cabin, the lower deck maximises every inch available.



# 2017 is our 50th anniversary

## And we're celebrating a #YearOfGoldenMoments

It's not enough to build a beautiful boat just for the sake of it. Building the kind of yachts which we are proud to put the Fairline name to, requires something more than just engineering genius or craftsmanship. It also requires the desire to create extraordinary moments for whoever owns it. Moments of joy, exhilaration, excitement...and even tranquility.

With this year being our 50th Anniversary, we'll be celebrating all those incredible, golden moments since the brand's founder Jack Newington first launched the famous Fairline 19.

Please feel free to explore, or better yet, share your own Fairline Golden Moment on Twitter or Instagram with the hashtag **#YearOfGoldenMoments**

A YEAR OF  
*Golden Moments*

TARGA  
63 GTO

INTRODUCTION

MAIN  
FEATURES

EXTERIOR  
DESIGN

INTERIOR  
DESIGN

PRINCIPLE  
DIMENSIONS

GENERAL  
ARRANGEMENTS

CELEBRATING  
50 YEARS

DEALERS

  
**FAIRLINE**  
YACHTS



#YEAROFGOLDENMOMENTS AND BEYOND



# An unrivalled dealership network

Just like the many parts that make up one of our extraordinary yachts, so too are international dealers handpicked and perfectly placed to cover anything and everything you could want from Fairline (you can visit [fairline.com](https://www.fairline.com) for details of your nearest dealer).

Fairline Argentina  
Fairline Benelux & W. Germany  
Fairline Brazil  
Fairline Channel Islands  
Fairline Chertsey  
Fairline Chesapeake  
Fairline Colombia  
Fairline Costa Blanca  
Fairline Côte d’Azur  
Fairline Croatia

Fairline Cyprus  
Fairline Denmark  
Fairline Eastbourne  
Fairline Florida  
Fairline Greece  
Fairline Hong Kong  
Fairline Ibiza  
Fairline India  
Fairline Indonesia

Fairline Israel  
Fairline Italia  
Fairline Japan  
Fairline Korea  
Fairline Lebanon  
Fairline Malta  
Fairline Menorca  
Fairline Mexico  
Fairline Middle East  
Fairline Monaco

Fairline New South Wales  
Fairline New York  
Fairline New Zealand  
Fairline North Mallorca  
Fairline Poland  
Fairline Portugal  
Fairline Queensland  
Fairline Russia  
Fairline Singapore  
Fairline South Africa

Fairline South China  
Fairline South Mallorca  
Fairline Southampton  
Fairline Sverige  
Fairline Switzerland  
Fairline Thailand  
Fairline Turkey  
Fairline Ukraine  
Fairline Victoria  
Fairline Western Australia





# TARGA 63 GTO